

4-3-63

20

1-50-42

1-18-65

1024

1-50-42



6-50-43
1-50-42





1-29-71 11:53

BROWARD COUNTY, FLORIDA

SCALE 1" = 300'

1-50-42



1-30-73

1"=300'

1-50-42



2-11-74

1-300'

1-50-42





1-1975

RADER AND ASSOCIATES, INC.
MIAMI, FLORIDA

BROWARD COUNTY FLA
SCALE 1" = 300'

11

SEC	TWP	RNG
11	50S	42E

DATE FLOWN
1-23-76

BROWARD COUNTY

1-50-42



1"=300'



This is a Print of the Original
Granatex Or File With the
OFFICE OF ENGINEERING
DEPARTMENT OF TRANSPORTATION
BROWARD COUNTY FLORIDA

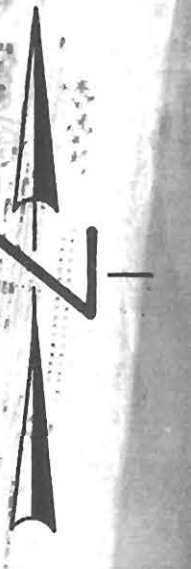
Bosworth Aerial Surveys Inc.

DATE FLOWN

12-28-77

BROWARD COUNTY

15042



1"=300'



This is a Print of the Original
Cassette On File With the
OFFICE OF ENGINEERING
DEPARTMENT OF TRANSPORTATION
BROWARD COUNTY, FLORIDA

Bosworth Aerial Surveys, Inc.

IT IS INTENDED THAT THIS MAPPING COMPLY WITH U.S.
NATIONAL MAP ACCURACY STANDARDS; HOWEVER,
SUCH ACCURACY, OR ANY OTHER LEVEL OF ACCURACY,
IS NOT GUARANTEED BY BOSWORTH AERIAL SURVEYS.

2-2-80

1-50-42



1" = 300'



1-50-42
(84)

STATE PLANE COORDINATES

POINT	STATE PLANE COORDINATES	
	X	Y
A	788258.50	656601.69
B	788491.87	651182.19
C	793438.97	651464.06
D	790864.75	652374.44

POINT	STATE PLANE COORDINATES	
	X	Y
E	788733.69	654716.50
F	791555.00	655470.94
G	793705.50	656734.44



BROWARD COUNTY, FL.

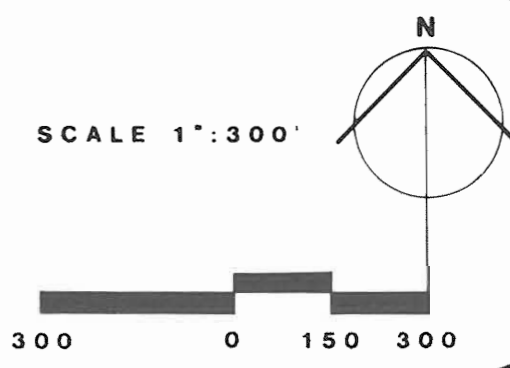
1 50 42

SECTION TOWNSHIP RANGE

FLIGHT DATE: MARCH, 1984
BY BOSWORTH AERIAL SURVEYS INC. - LAKE WORTH, FL.

35-49-42	38-49-42	31-49-43
2-50-42	THIS SHEET	6-50-43
11-50-42	12-50-42	7-50-43

This is a copy of the original mylar on file with the Engineering Division, Public Works Department, Broward County, Florida.
Permission to copy this photograph is granted provided that the copies are not made or reduplicated for distribution for direct commercial advantage and that the entire title block appear on all copies. To copy or redistribute otherwise requires a fee and/or the specific permission of the Broward County Office of Planning.
Broward County makes no claim or guarantee regarding the accuracy of any copies.



1-50-42
(87)



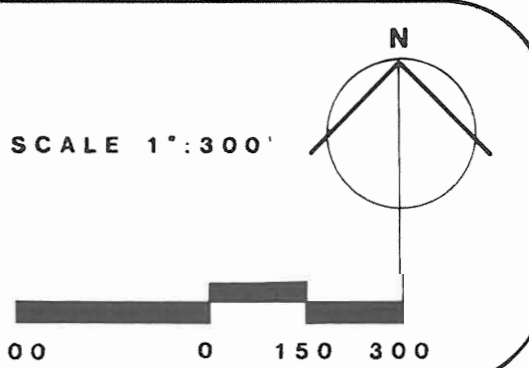
BROWARD COUNTY, FL.

1 50 42
SECTION TOWNSHIP RANGE

FLIGHT DATE: APRIL, 1987
BY BOSWORTH AERIAL SURVEYS INC. - LAKE WORTH, FL.

THIS SHEET

This is a copy of the original mylar on file with the Engineering Division, Public Works Department, Broward County, Florida.
Permission to copy this photograph is granted provided that the copies are not made or reduplicated for distribution for direct commercial advantage and that the entire title block appear on all copies. To copy or redistribute otherwise requires a fee and/or the specific permission of the Broward County.
Broward County makes no claim or guarantee regarding the accuracy of any copies.



1-50-42
(90)



BROWARD COUNTY, FL.

1 50 42 4-23-90
SECTION TOWNSHIP RANGE DATE OF FLIGHT

PAN AMERICAN SURVEYS INC. MIAMI, FL.

THIS IS A COPY OF THE ORIGINAL MYLAR ON FILE WITH THE ENGINEERING DIVISION, PUBLIC WORKS DEPARTMENT, BROWARD COUNTY, FLORIDA.

PERMISSION TO COPY THIS PHOTOGRAPH IS GRANTED, PROVIDING THAT THE COPIES ARE NOT MADE OR REDUPLICATED FOR DISTRIBUTION FOR DIRECT COMMERCIAL ADVANTAGE, AND THAT THE ENTIRE TITLE BLOCK APPEARS ON ALL COPIES. TO COPY OR OTHERWISE REDISTRIBUTE REQUIRES A FEE AND/OR THE SPECIFIC PERMISSION OF THE BROWARD CO. OFFICE OF PLANNING.

BROWARD COUNTY MAKES NO CLAIM OR GUARANTEE REGARDING THE ACCURACY OF ANY COPIES.

N



SCALE: 1" = 300'

This is a copy of the original mylar on file with the Engineering Division, Public Works Department, Broward County, Florida.

Permission to copy this photograph is granted, providing that the copies are not made or reduplicated for distribution for direct commercial advantage, and that the entire title block appears on all copies. To copy or otherwise redistribute requires a fee and/or the specific permission of Broward Co.

Broward County makes no claim or guarantee regarding the accuracy of any copies.

T 50 S - R 42 E

35	36	31
2	THIS SHEET	6
11	12	7



300' 200' 100' 0' 150' 300'

SCALE: 1" = 300'

BROWARD COUNTY, FL.

DATE OF FLIGHT:

SECTION

TOWNSHIP

RANGE

FEB. 21, 1995

1

50

42

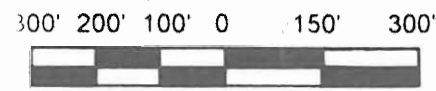
BY: KUCERA SOUTH, INC. - LAKELAND, FLORIDA



This is a copy of the original mylar on file with the Engineering Division, Public Works Department, Broward County, Florida.

Permission to copy this photograph is granted, providing that the copies are not made or reduplicated for distribution for direct commercial advantage, and that the entire title block appears on all copies. To copy or otherwise redistribute requires a fee and/or the specific permission of Broward Co.

Broward County makes no claim or guarantee regarding the accuracy of any copies.



SCALE: 1" = 300'

BROWARD COUNTY, FL.

DATE OF FLIGHT:

SECTION

TOWNSHIP

RANGE

JAN. 21, 2000

01

50S

42E

BY: 3DI FLORIDA, LLC. HOLLY HILL, FL

